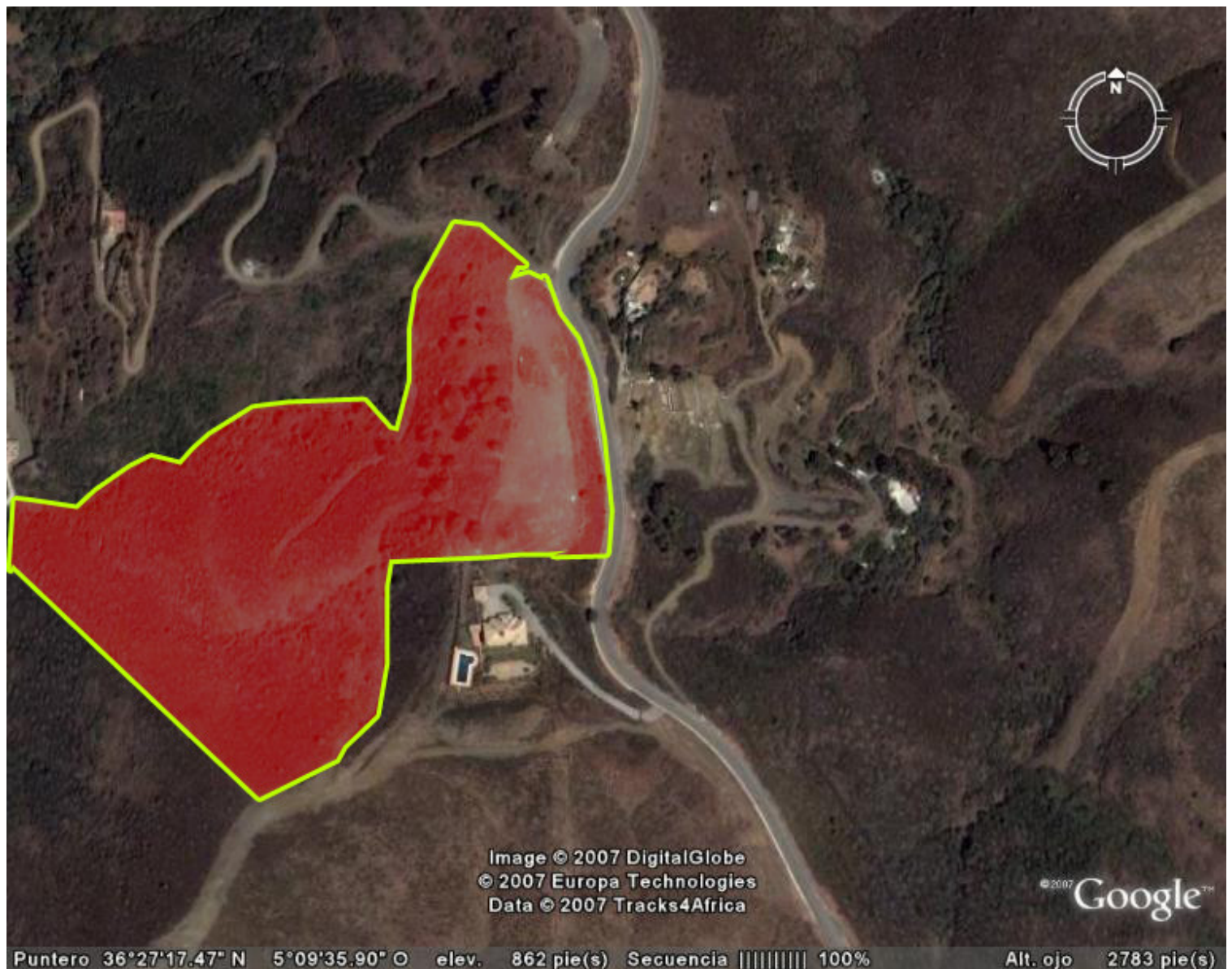


# ESTEPONA



bedrooms

<---

bathrooms

---

plot m<sup>2</sup>

52,000

## LAND IN ESTEPONA

Land, Estepona, Costa del Sol. Garden/Plot 52000 m<sup>2</sup>. Setting : Close To Shops, Close To Town. Orientation : East, West. Condition : Excellent. Views : Sea, Mountain, Panoramic.

community

---

garbage

---

ibi

---

price

1,750,000 €



