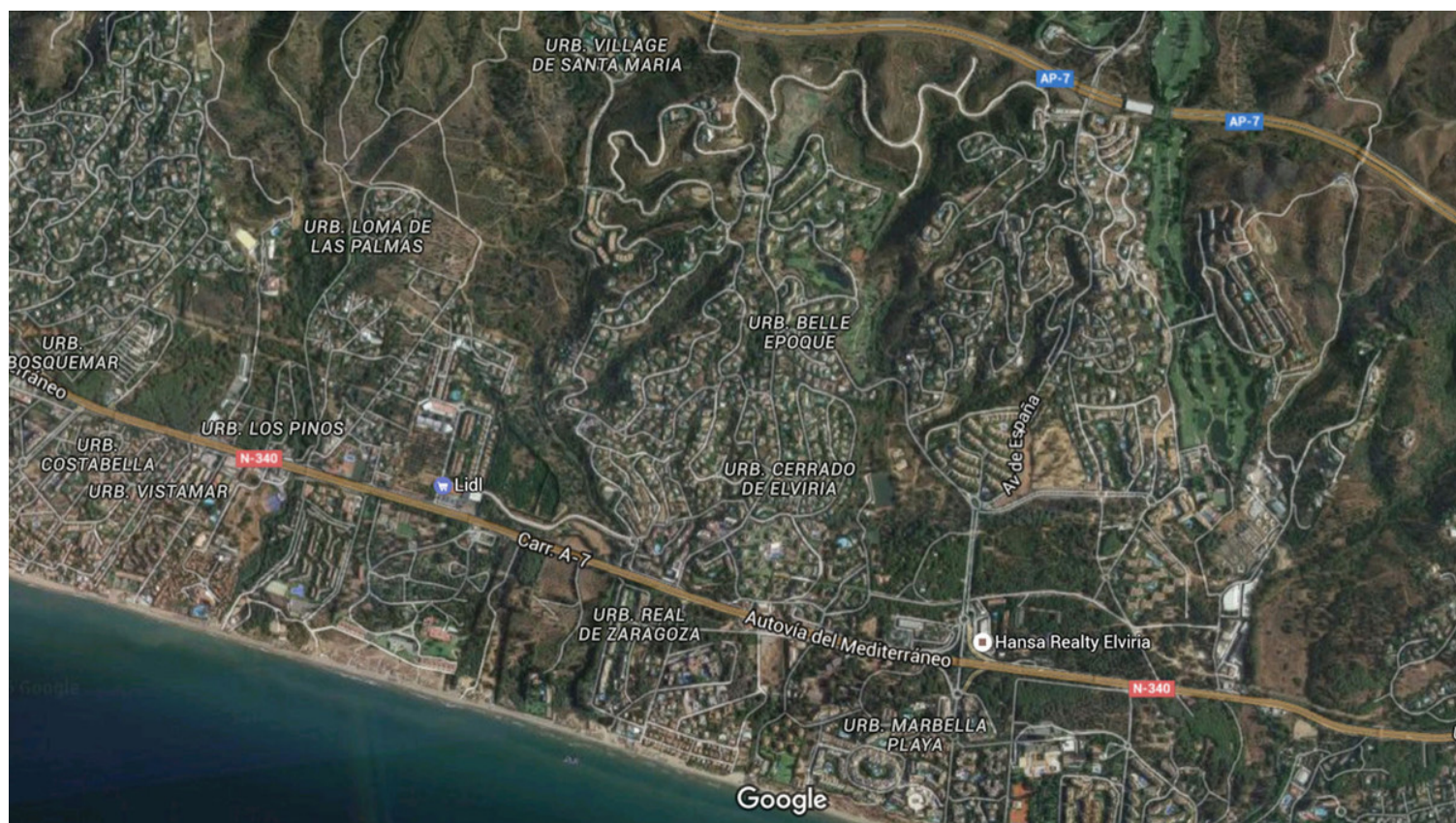


## ELVIRIA



bedrooms

&lt; ---

bathrooms

---

plot m<sup>2</sup>

28,123

## LAND IN ELVIRIA

19 PLOTS - ELVIRIA - EAST MARBELLA FLEXIBLE PLAN: The company who own the land have a plan to pruschase 5 plots, then option for another 5 plots and so on. This is a residential area of luxury villas, located in the heart of the Costa del Sol, 9 Km from the centre of Marbella and 35 minutes from the International Airport from Malaga. In total there are 19 plots available which correspond to the numbers 99-100-101-102-103-104-105-106-107-108-109-110-111-112-115-116-117-118-119, surrounded by a large number of native trees with magnificent views of the sea from the plots. SSE orientation. By car: 2 mins to Amenities - 35 mins to Malaga airport – 10 mins to Marbella town centre – 15 mins to Puerto Banus – 5 mins to Beach

community

---

garbage

---

ibi

---

price

6,690,000 €



