

# ELVIRIA



bedrooms  
**4**

bathrooms  
**4**

built m<sup>2</sup>  
**400**

terrace m<sup>2</sup>  
**179**

plot m<sup>2</sup>  
**1,428**

## VILLA IN ELVIRIA

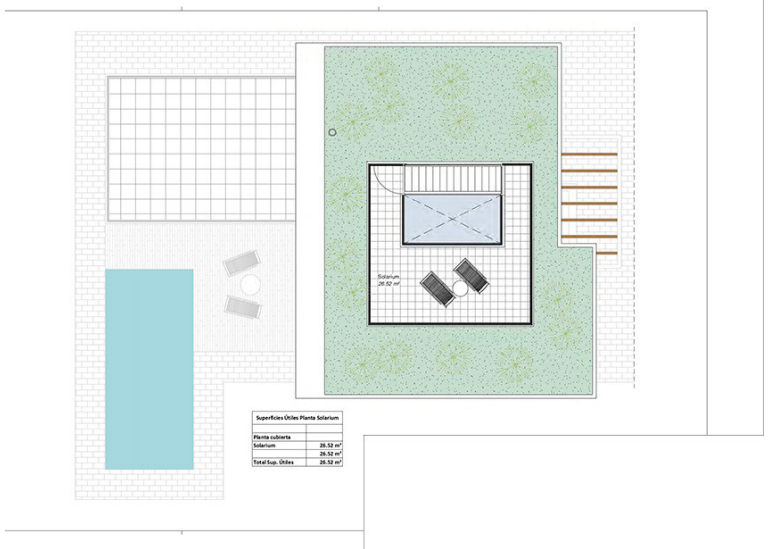
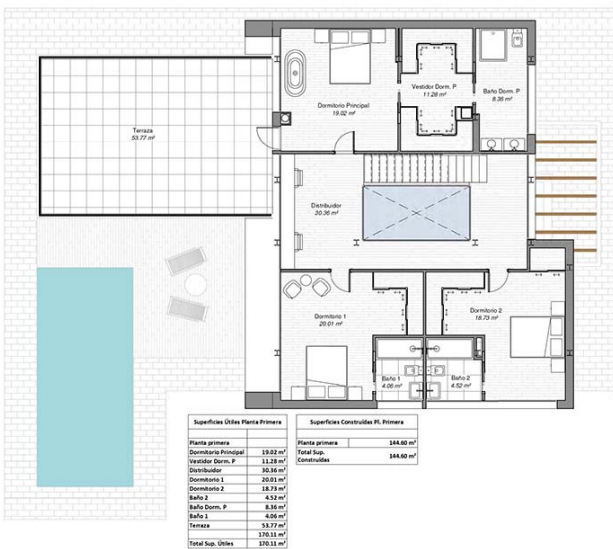
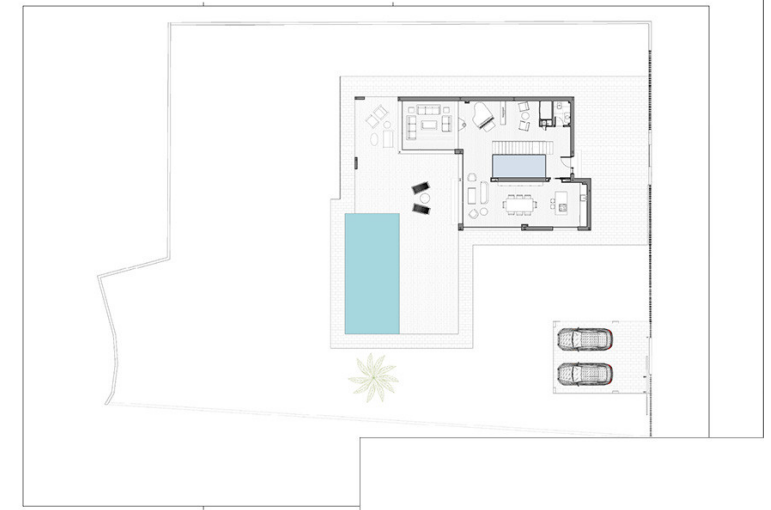
New Development: Prices from 2,200,000 € to 2,200,000 €. [Beds: 4 - 4] [Baths: 4 - 4] [Built size: 400.00 m2 - 400.00 m2] Under construction a luxurious villa facing south-west in the prestigious urbanization of Elviria and consisting of 4 bedrooms, 3 of which have dressing rooms and en-suite bathrooms. There are a total of 4 bathrooms and a guest toilet, as well as a 35 m2 gym, an elevator, terraces, an infinity-style pool, etc. **GROUND FLOOR** When entering the villa into a large hall, there is an elevator connected to all the floors. The ground floor has a 100 m2 living room with high windows with a modern open kitchen. It is divided into several areas such as a tv room, a reading area, living and dining room. The living room is adjacent to a large partially covered terrace with an infinity pool and gardens with stunning views. **FIRST FLOOR** The first floor consists of a 30 m2 hall wi...

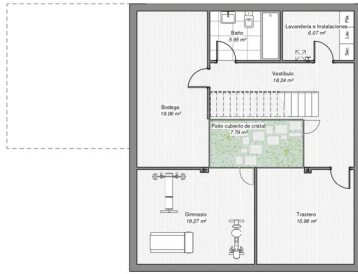
community  
---

garbage  
---

ibi  
---

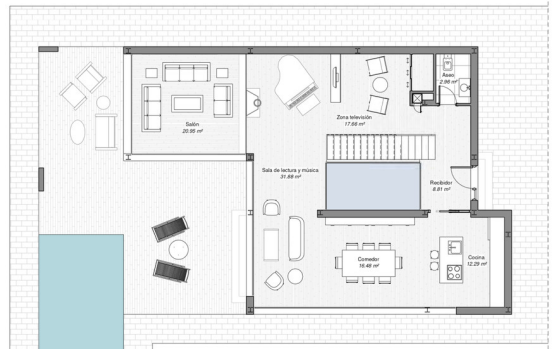
price  
**2,200,000 €**





Superficies Útiles Oficina	
Planta Sótano	38.88 m <sup>2</sup>
Bodega	19.09 m <sup>2</sup>
Tostadora	13.88 m <sup>2</sup>
Baño	8.27 m <sup>2</sup>
Vestibulo	14.24 m <sup>2</sup>
Pisos cubiertos de cristal	7.79 m <sup>2</sup>
Lavandería e instalaciones	6.67 m <sup>2</sup>
Gimnasio	9.27 m <sup>2</sup>
Total Sup. Útiles	128.36 m <sup>2</sup>

Superficies Construidas	
Planta Sótano	138.64 m <sup>2</sup>
Planta Baja	129.22 m <sup>2</sup>
Planta primera	144.66 m <sup>2</sup>
Total Sup. Construidas	412.52 m <sup>2</sup>



Superficies Útiles Planta Baja	
Planta Baja	128.22 m <sup>2</sup>
Sala de lectura y música	31.68 m <sup>2</sup>
Recepción	8.89 m <sup>2</sup>
Oficina	12.22 m <sup>2</sup>
Gimnasio	9.27 m <sup>2</sup>
Zona recepción	17.26 m <sup>2</sup>
Sala	25.95 m <sup>2</sup>
Total Sup. Útiles	233.09 m <sup>2</sup>

Superficies Construidas P1. Baja	
Planta Baja	128.22 m <sup>2</sup>
Total Sup. Construidas	128.22 m <sup>2</sup>