

ELVIRIA



bedrooms

4

bathrooms

4

 built m²
400

 terrace m²
179

 plot m²
1,428

VILLA IN ELVIRIA

New Development: Prices from 2,200,000 € to 2,200,000 €. [Beds: 4 - 4] [Baths: 4 - 4] [Built size: 400.00 m² - 400.00 m²] Under construction a luxurious villa facing south-west in the prestigious urbanization of Elviria and consisting of 4 bedrooms, 3 of which have dressing rooms and en-suite bathrooms. There are a total of 4 bathrooms and a guest toilet, aswell as a 35 m² gym, an elevator, terraces, an infinity-style pool, etc. **GROUND FLOOR** When entering the villa into a large hall, there is a elevator connected to all the floors. The ground floor has a 100 m² living room with high windows with a modern open kitchen. It is divided into several areas such as a tv room , a reading area, living and dining room. The living room is adjacent to a large partially covered terrace with an infinity pool and gardens with stunning views. **FIRST FLOOR** The first floor consists of a 30 m² hall wi...

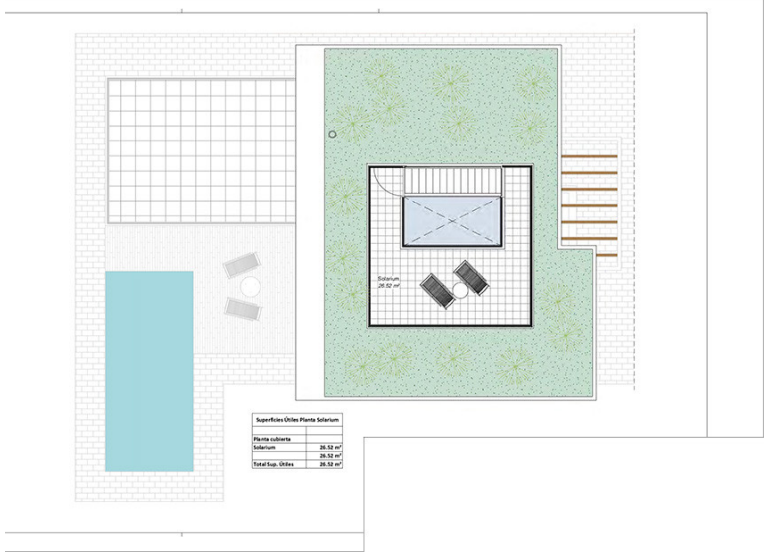
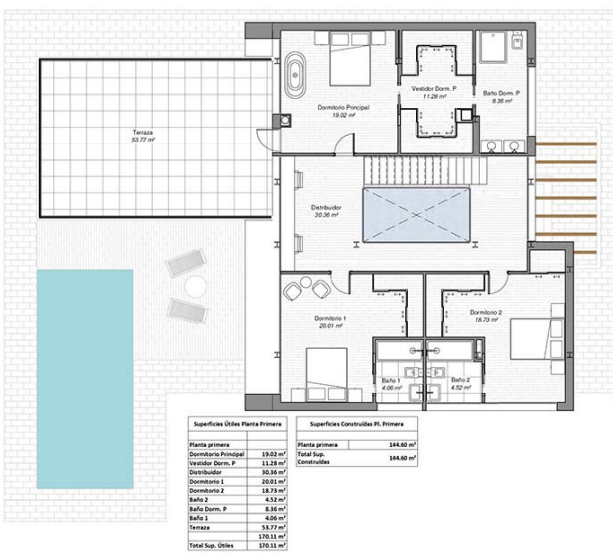
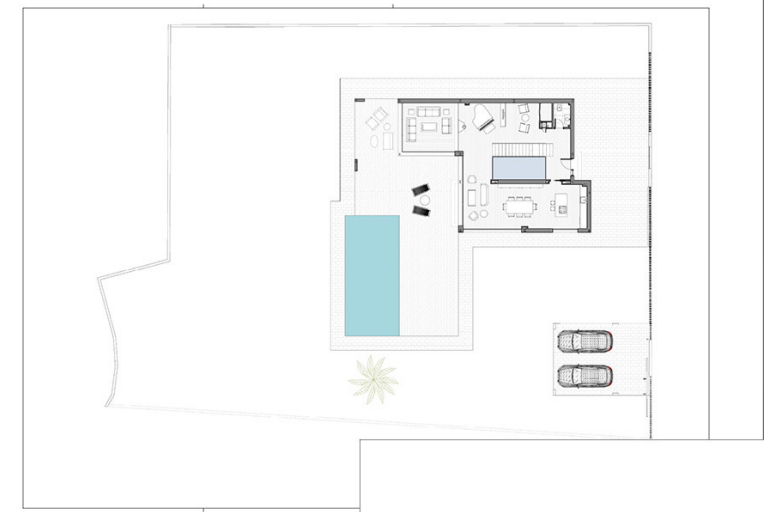
community

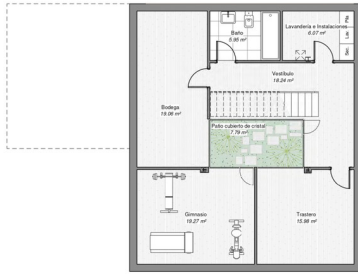
garbage

ibi

price

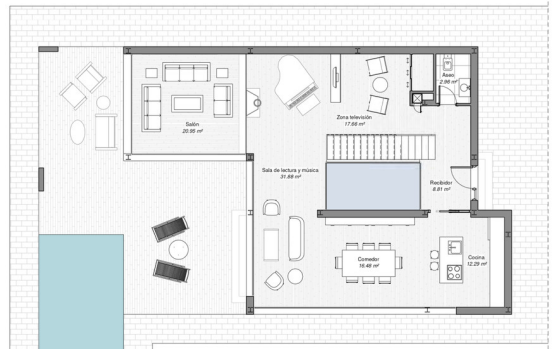
2,200,000 €





Superficies Útiles Oficina	
Planta Sótano	38.88 m ²
Bodega	19.09 m ²
Tostadora	13.88 m ²
Baño	8.27 m ²
Vestibulo	14.24 m ²
Pisos cubiertos de cristal	7.79 m ²
Lavandería e instalaciones	6.67 m ²
Gimnasio	9.27 m ²
Total Sup. Útiles	128.36 m ²

Superficies Construidas	
Planta Sótano	138.65 m ²
Planta Baja	129.22 m ²
Planta primera	144.66 m ²
Total Sup. Construidas	412.53 m ²



Superficies Útiles Planta Baja	
Planta Baja	128.22 m ²
Sala de lectura y música	31.68 m ²
Baño	8.27 m ²
Cocina	12.22 m ²
Comedor	16.66 m ²
Recepción	8.89 m ²
Zona recepción	17.26 m ²
Baño	8.27 m ²
Total Sup. Útiles	231.05 m ²

Superficies Construidas P1. Baja	
Planta Baja	128.22 m ²
Total Sup. Construidas	128.22 m ²