

CORTIJO BLANCO



bedrooms

2

bathrooms

2

built m²

225

PENTHOUSE IN CORTIJO BLANCO

Experience coastal luxury in this exceptional third-floor penthouse, ideally situated on the seafront promenade of Cortijo Blanco, just a short stroll from Puerto Banús. This unique property combines two apartments into a spacious residence exceeding 200 m², offering both comfort and versatility. ■Key Features: 2 spacious bedrooms 2 full bathrooms Open-concept kitchen, dining, and living area. Generous windows south orientation and 2 terraces with west orientation, providing abundant natural light and stunning sea views. Elevator access and communal parking. ■Prime beachfront position on the promenade, within walking distance to Puerto Banús and surrounded by essential services

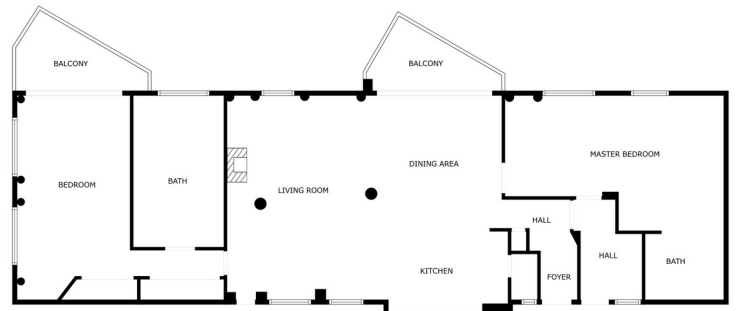
community

garbage

ibi

price

850,000 €



SIZES ARE APPROXIMATE, ACTUAL MAY VARY.



