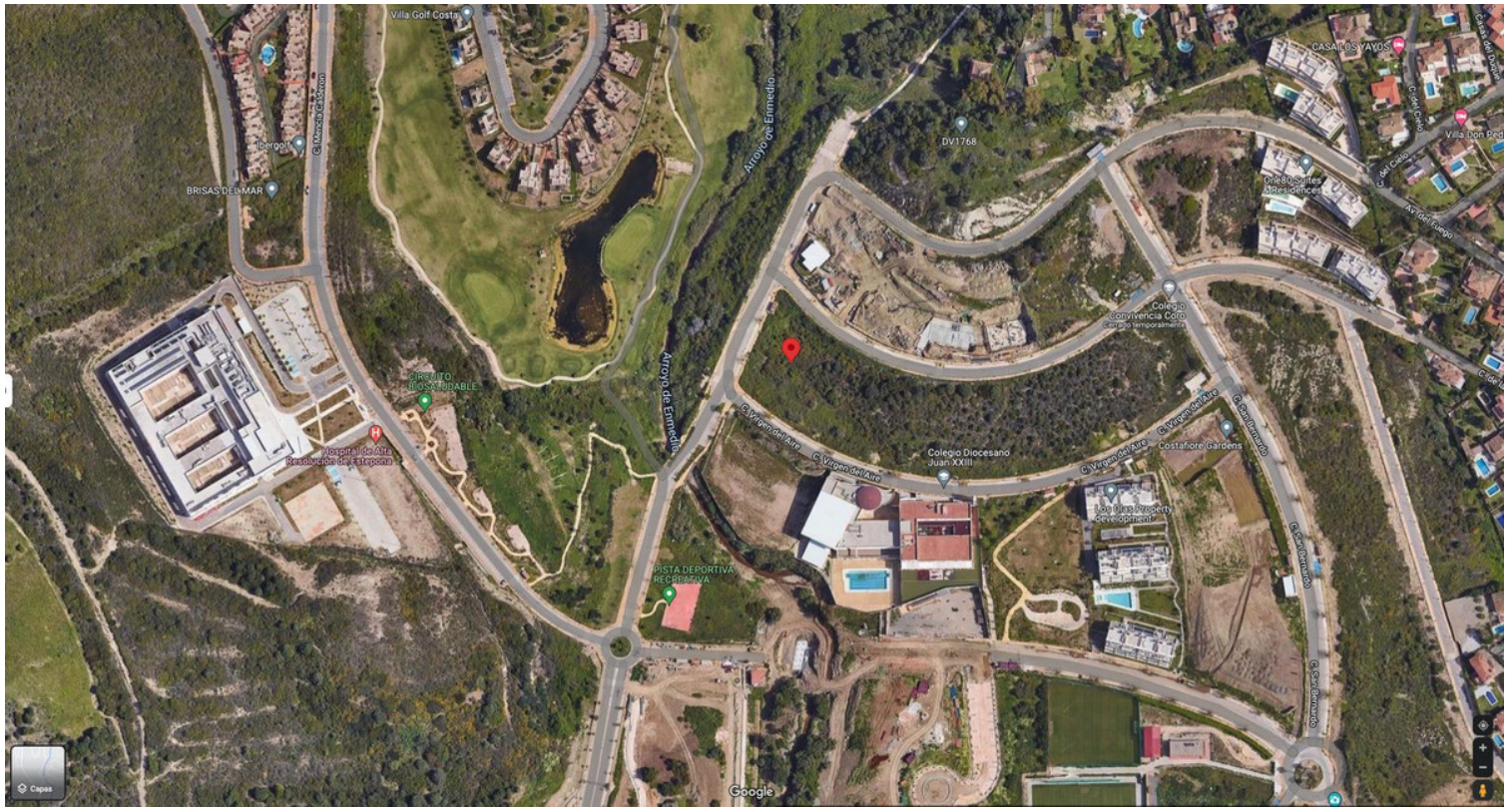


ESTEPONA



bedrooms

< ---

bathrooms

plot m²
13 673

■■■■■■■■ IN ESTEPONA

Building plot in Arroyo Enmedio of 13.673,56 m² of which 8.384,77 m² are buildable, to be able to build homes or apartments. It has sea views, facing south, near the sea at only 700m, gas station, restaurants, school and new hospital. Urbanization finished at 80% and 5 minutes from the center of Estepona. Possibility of construction project.

community

garbage

ibi

price
1 622 506 €

