

BENAHAVÍS



■■■■■■■■

■■■■■■■■

plot m²

3 550

<---

■■■■■■■■ IN BENAHAVÍS

This stunning and private plot of 3,550 m² is nestled within the exclusive Monte Mayor urbanisation, offering 24/7 security and complete tranquillity. Positioned on a protected hillside, the plot boasts breathtaking panoramic views of the Mediterranean Sea, surrounding mountains, and lush countryside forests. With its southeast orientation, the location ensures an abundance of natural light and stunning sunrises, making it the perfect setting for a luxurious residence. The plot comes fully prepared for construction, with all land preparation completed, including a finished eco-retaining wall. It also includes a signed project by the renowned Villarroel-Torrico architects, celebrated for their iconic design of Marina Puente Romano. The proposed villa is a modern masterpiece, featuring a sleek contemporary design with approximately 1,500 m² of construction, including a spacious basement ...

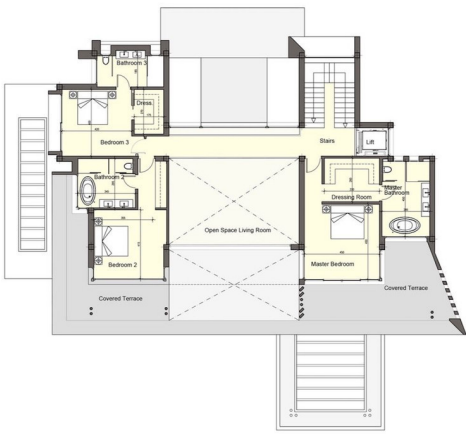
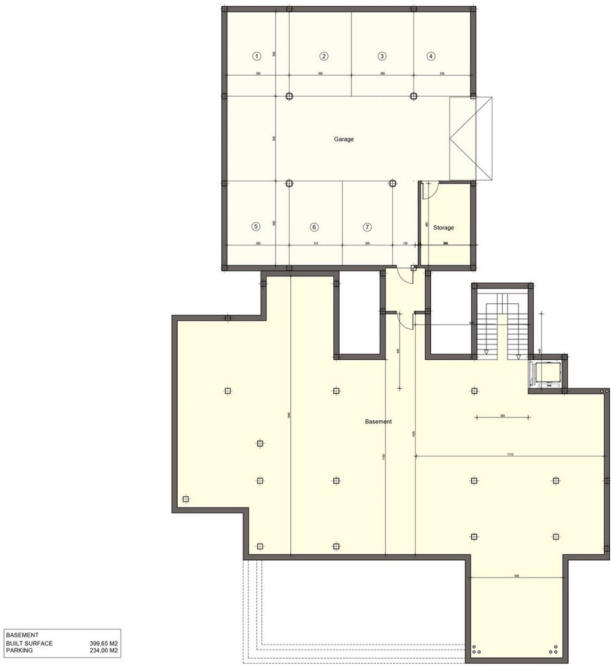
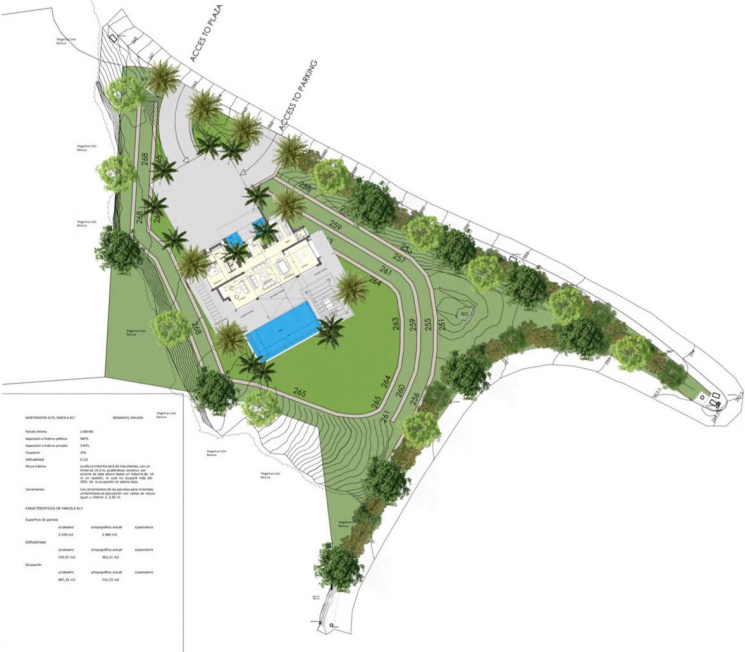
community

garbage

ibi

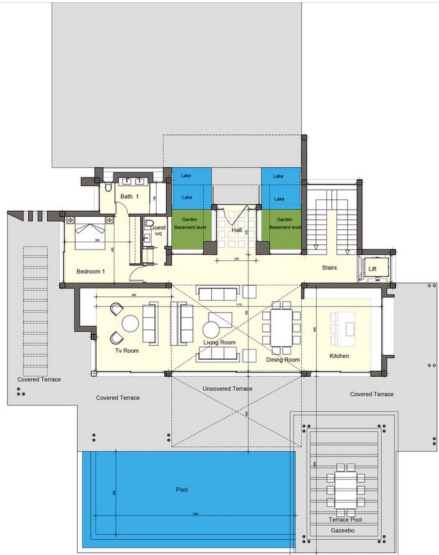
price

750 000 €



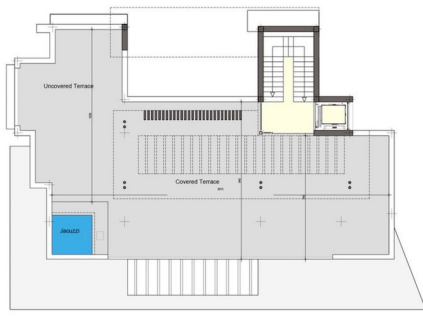
UPPER FLOOR
BUILT SURFACE
COVERED TERRACES

178.04 M2
76.75 M2



GROUND FLOOR
BUILT SURFACE
COVERED TERRACES
UNCOVERED TERRACES
POOL

180.87 M2
175.53 M2
33.03 M2
85.82



SOLARIUM	27.45 m2
BUILT SURFACE	71.18 m2
COVERED TERRACES	145.31 m2

