

BENALMADENA COSTA



bedrooms

< ---

bathrooms

plot m²

1 991

■■■■■■■■ IN BENALMADENA COSTA

UNIQUE INVESTMENT OPPORTUNITY in Benalmádena Costa. SITUATED in La Capellanía next to Reserva del Higuerón. Totally surrounded by urbanised green areas. SEA VIEWS. Plot 400 metres from the beach of Carvajal. TO BUILD 1, 2 or 3 VILLAS. Land classified as type U1 single-family, several options to build, all of them with large gardens, swimming pools, terraces and independent garages. URBAN DATA Surface area: 1991 m² Occupation: 25% 497m² Buildable area: 0,38 756m² Minimum plot to segregate: 600m² CONTACT us without obligation to visit the property and obtain the technical and economic report of the investment. We provide FREE advice from our team of architects who will inform you of the different options to get the most out of the property. ABOUT BENALMADENA Located on the Costa del Sol, Benalmadena is one of the most attractive areas for property investment in Spain, thanks to i...

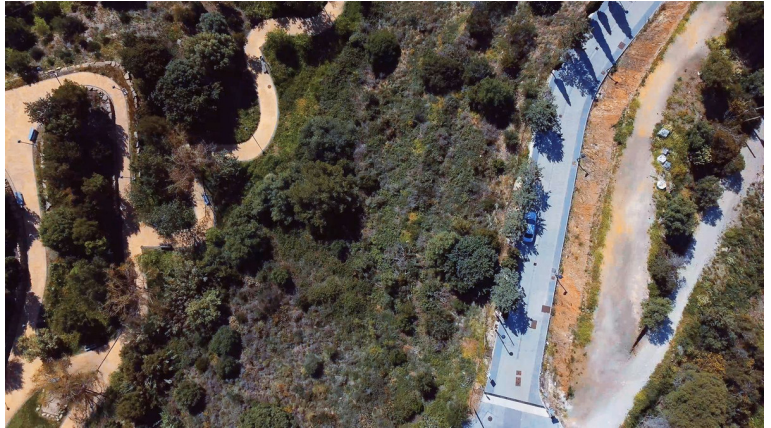
community

garbage

ibi

price

720 000 €



PARCELA Urbana
ROI 49%



