

# ESTEPONA



bedrooms

<---

bathrooms

---

plot m<sup>2</sup>

3 212

## ■■■■■■■■ IN ESTEPONA

Located on a plot of 3,212 m<sup>2</sup>, this land is classified as sectorized and planned urbanizable land, with a specific designation as a Community Equipment Zone. Designed for social benefit, its utilization and use are intended for social facilities, offering extraordinary potential for the development of enriching projects. The maximum buildable surface of 3,212 m<sup>2</sup> allows for the realization of an ambitious vision that has been carefully studied. This land has been considered for three possible uses, each of which has been meticulously planned: Senior Apartments: A proposal that includes assisted living units with a Day Center, fostering a safe and welcoming environment for the elderly. Geriatric Residence: Designed with a hospital focus, this option offers facilities that meet the highest standards of care and comfort for the geriatric population. Student Residence: A vibrant alternat...

community

---

garbage

---

ibi

---

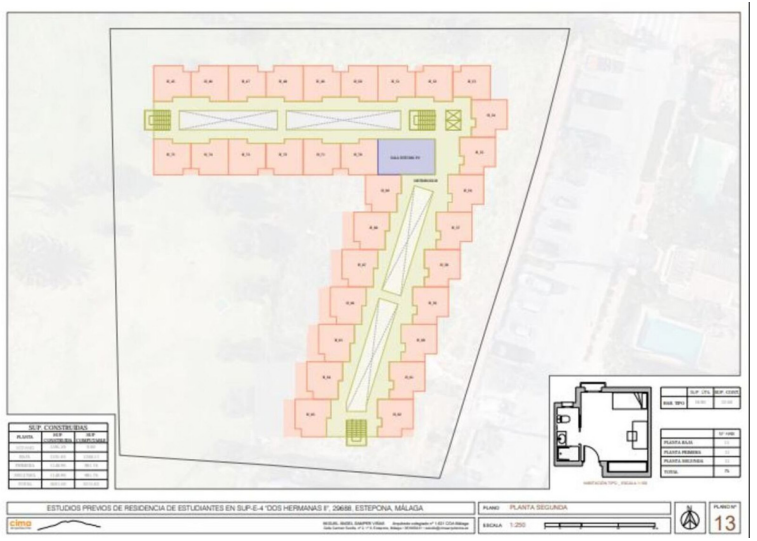
price

1 750 000 €





ESTUDIOS PREVIOS EN PARCELA PARA EQUIPAMIENTO SOCIAL "EL CAMPANARIO" SUP-E-4 "DOS HERMANAS" F. 20688. ESTEPOÑA, MÁLAGA PLANO: DESPLAZAMIENTO



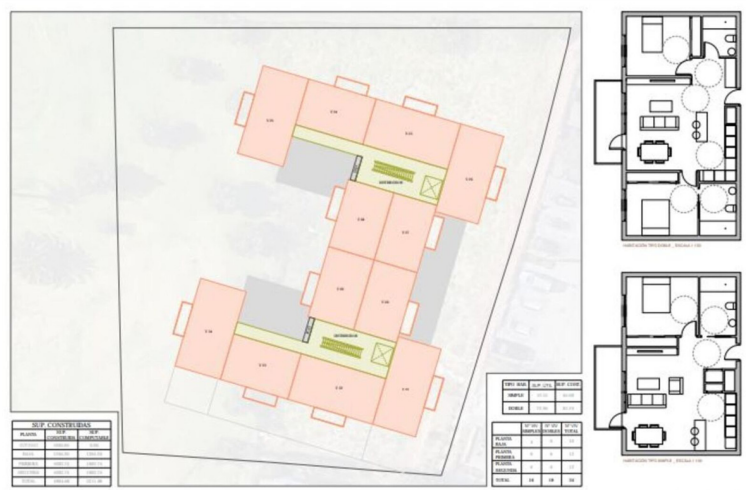


ESTUDIOS PREVIOS DE RESIDENCIAL DE VIV. TUTELADAS EN B.U.P.-E-4 DOS HERMANAS F. 20688. ESTEPONA, MÁLAGA

PLANO: PLANTA PRIMERA

ESCALA: 1/200

PLANTAS: 04



ESTUDIOS PREVIOS DE RESIDENCIAL DE VIV. TUTELADAS EN B.U.P.-E-4 DOS HERMANAS F. 20688. ESTEPONA, MÁLAGA

PLANO: PLANTA SEGUNDA

ESCALA: 1/200

PLANTAS: 05