

BENALMADENA COSTA



■■■■■■■

2

■■■■■■■

2

■■■■■■■ m²

148

■■■■■■■ m²

46

■■■■■■■■■■■■■■■■■■■■ IN BENALMADENA COSTA

Large ground floor apartment at Golf Resort Torrequebrada.. This spacious ground floor apartment is located within the leafy Torrequebrada Golf Resort. The apartment comprises 148 m² of living space with a partially covered terrace of approximately 46m². Floor-to-ceiling sliding doors seamlessly connect the living room and outdoor area. Layout The very spacious living/dining room (40 m²) flows into the separate, fully equipped kitchen. A cleverly designed extension has been created from the living room, which can be used as an additional third bedroom, gym, or office, with direct access to the generous 46m² terrace, which overlooks the first of the four communal pools in the development and the communal gardens, without being so close that the pool would cause any disturbance. The generous size of the terrace provides ample space for various purposes, such as an area for sun lounger...

community

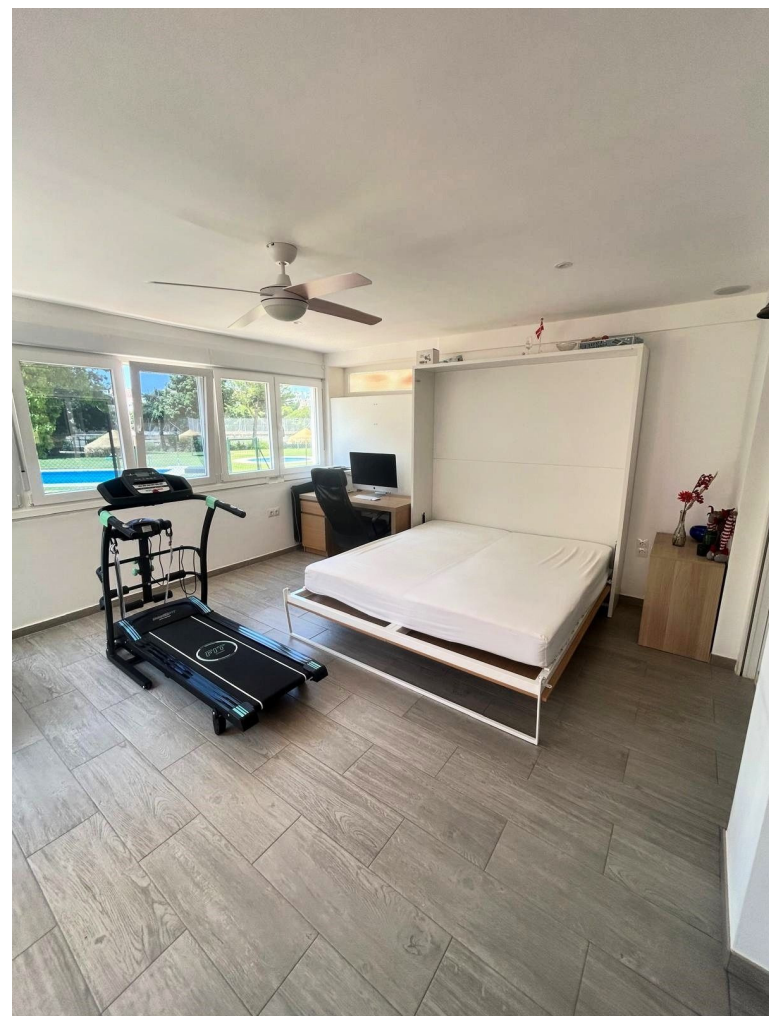
garbage

ibi

price

495 000 €





* It must be noted that some elements of this space have been generated

